



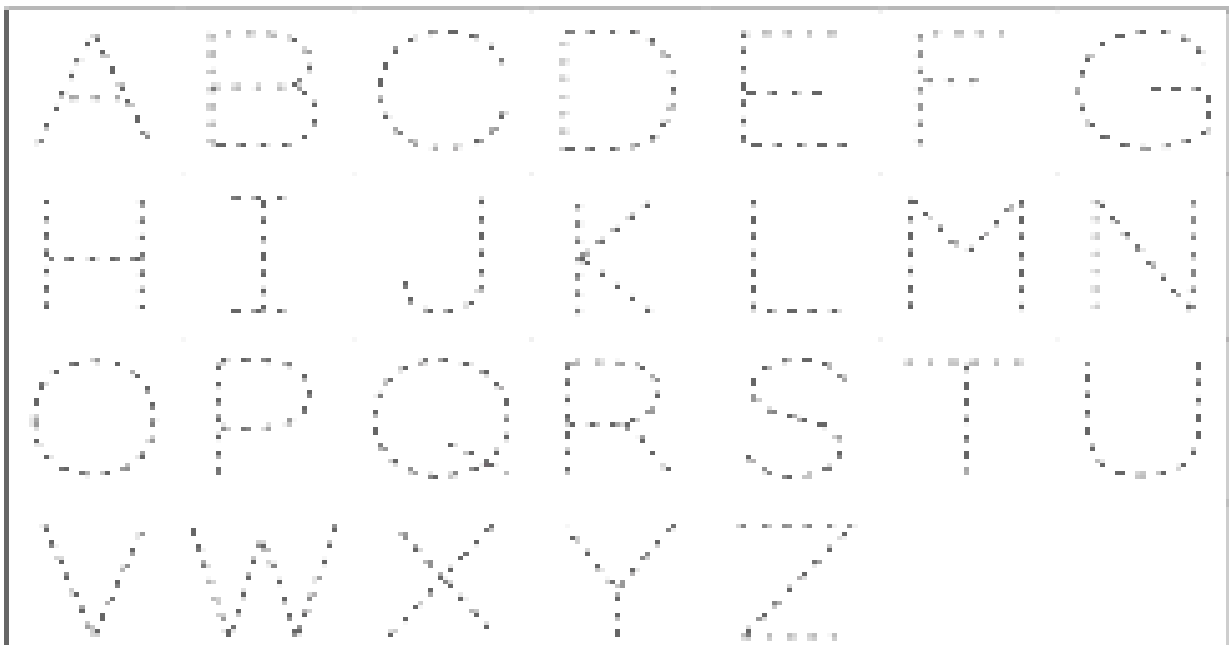
# ASPIRE WORLD SCHOOL HUMHAMA

Class: P.Nursery  
Subject: All Subjects

## WINTER ASSIGNMENT

Qno1: Write Capital A to Z.

Qno2: Trace and write (Capital Letter)



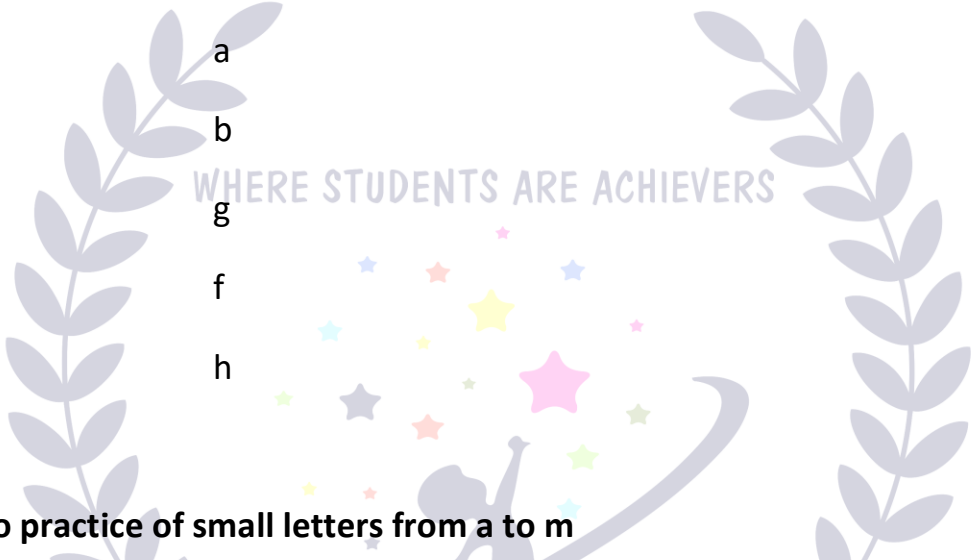
Qno3: Match the same Letters.

|   |   |   |   |
|---|---|---|---|
| A | D | E | H |
| B | C | F | E |
| C | B | G | G |
| D | A | H | F |

Qno4: Do Reading Loudly one page daily from English Textbook.

Qno5: Match Capital Letters with their respective Small Letters.

A j  
B c  
C e  
D i  
E d  
F a  
G b  
H g  
I f  
J h



**Qno6: Do practice of small letters from a to m**

|   |   |   |   |
|---|---|---|---|
| a | b | c | d |
| e | f | g | h |
| i | j | k | l |
| m |   |   |   |

**MATH**

**Qno1:** Write in figures from 1 to 30.

**Qno2:** Read and Learn only numbers names one to ten.

**Qno3:** What comes before?

\_\_\_\_\_ 6

\_\_\_\_\_ 14

\_\_\_\_\_ 7

\_\_\_\_\_ 15

\_\_\_\_\_ 8

\_\_\_\_\_ 16

\_\_\_\_\_ 9

\_\_\_\_\_ 20

\_\_\_\_\_ 12

\_\_\_\_\_ 24

\_\_\_\_\_ 13

\_\_\_\_\_ 25

**Qno4: What comes after?**

4 \_\_\_\_\_

22 \_\_\_\_\_

6 \_\_\_\_\_

23 \_\_\_\_\_

12 \_\_\_\_\_

17 \_\_\_\_\_

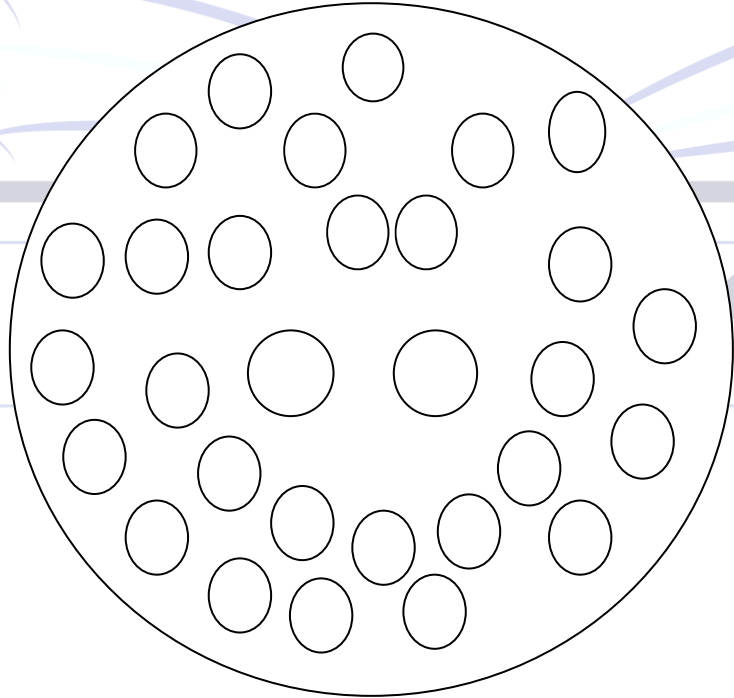
14 \_\_\_\_\_

20 \_\_\_\_\_

23 \_\_\_\_\_

25 \_\_\_\_\_

**Qno5: Join the Dots and write 1 to 30.**



WHERE STUDENTS ARE ACHIEVERS

School

## SCIENCE

**Qno1:** Learn name of five fruits.

**Qno2:** Learn name of five Body parts.

**Qno3:** Learn name of five vegetable.

**Qno4:** Learn and recognize five colours (Green, Blue, Red, Orange, and Black).



